



KENYA OFFICE: +254780660074
UK OFFICE : +447400660074
sales@ahlilestates.com
www.ahlilestates.com



Introduction

Welcome to Rumman Courts at Mtwapa, where luxury meets tranquility. Nestled in the serene heart of Mtwapa, our exclusive estate offers exquisite 3 bedroom Townhouses designed for modern living. Experience the perfect blend of comfort, elegance, and convenience in a community that truly feels like home.

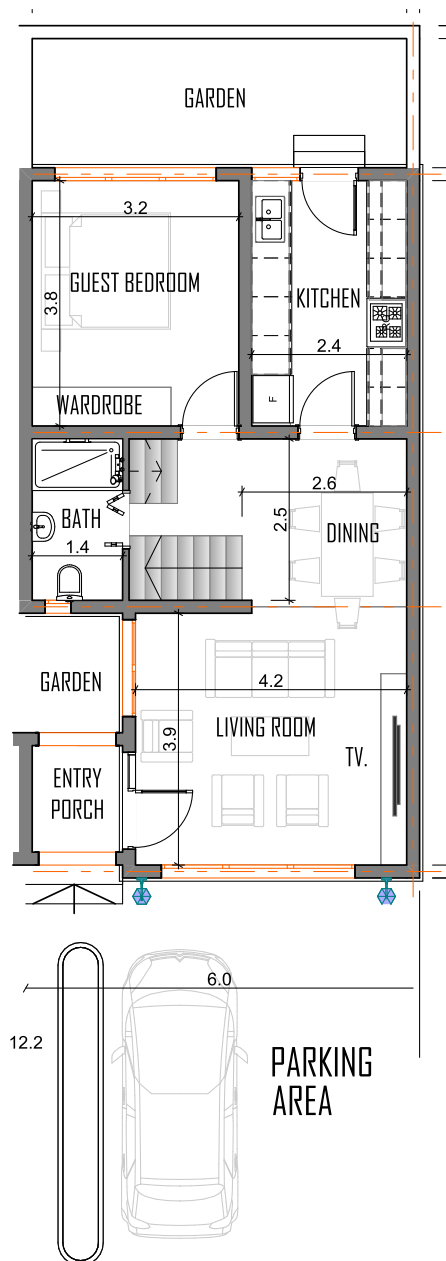


3 BEDROOM MANSIONS

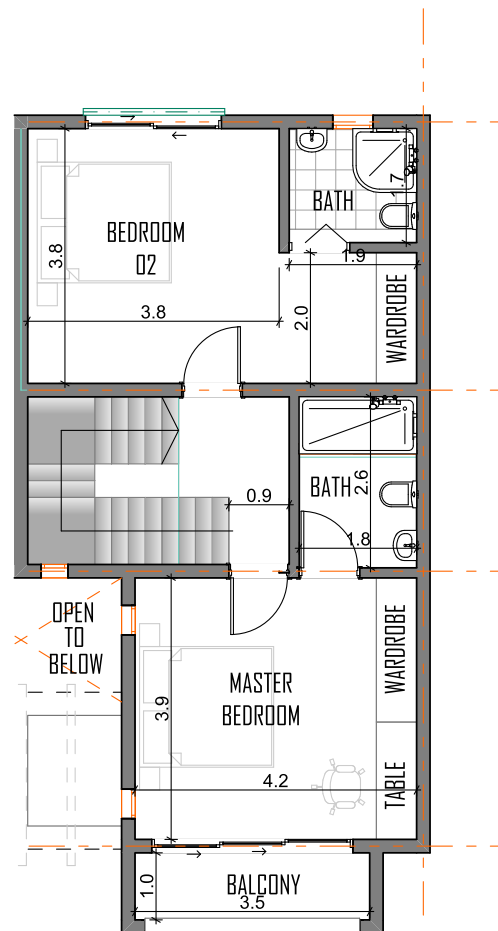
- 1550 sqft of built up space
- Backyard
- 1 parking
- 3 bathrooms
- 500sqft of terrace

Discover the ideal family home in our 3-bedroom Townhouse at Rumman Courts. With elegant finishes, a master suite, modern kitchen, and spacious living areas with dining, these homes blend comfort and style in a thoughtfully designed layout.

GROUND FLOOR



FIRST FLOOR



GROUND FLOOR = 681.14 SQ FT
FIRST FLOOR AREA = 745.72 SQ FT
TOTAL COVERED AREA = 1559.46 SQ FT



**3 BEDROOM TOWNHOUSE
3D FLOOR PLANS**



LIVING & DINING



DINING AREA

The dining area in our 3-bedroom Townhouse at Rumman Courts is a cozy yet elegant space, perfect for family meals or entertaining guests. With ample natural light and a seamless flow from the kitchen and living area, it's designed for both comfort and style.



MASTER B.ROOM



MASTER CLOSET

Each 3-bedroom Townhouse at Rumman Courts features a stylish, well-organized closet in the master suite, offering ample storage space with built-in shelves, drawers, and hanging areas, designed to keep your wardrobe neatly arranged and easily accessible.



KITCHEN

The kitchen in the 3-bedroom unit at Rumman Courts is designed to blend functionality with modern elegance. It features spacious granite countertops and custom cabinetry, providing ample storage for all your culinary needs.







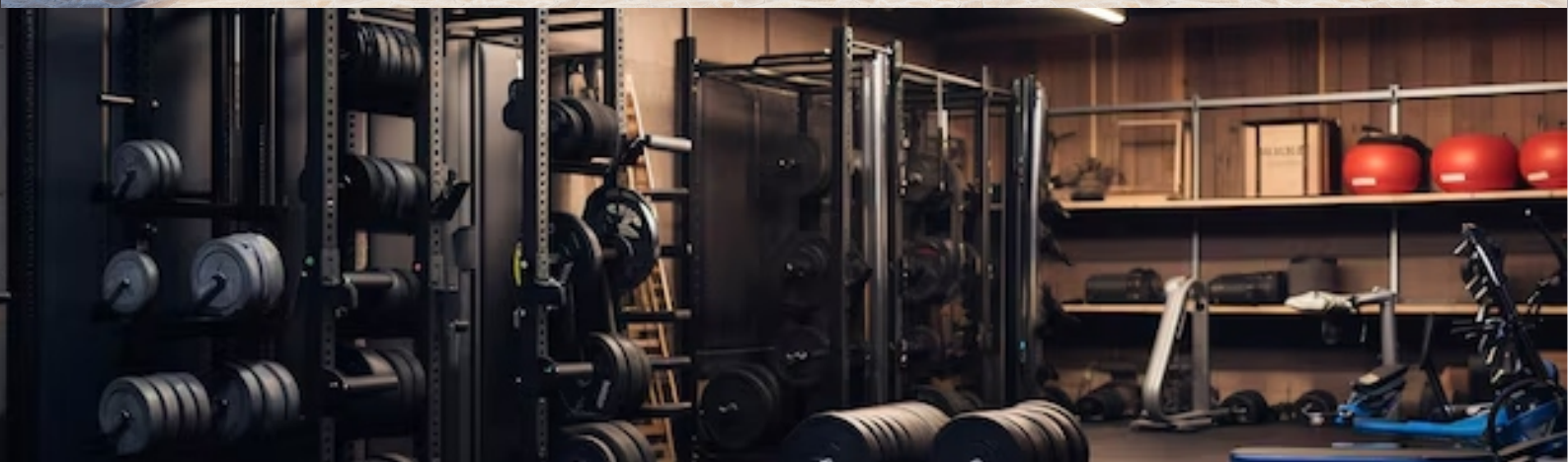
AMENITIES

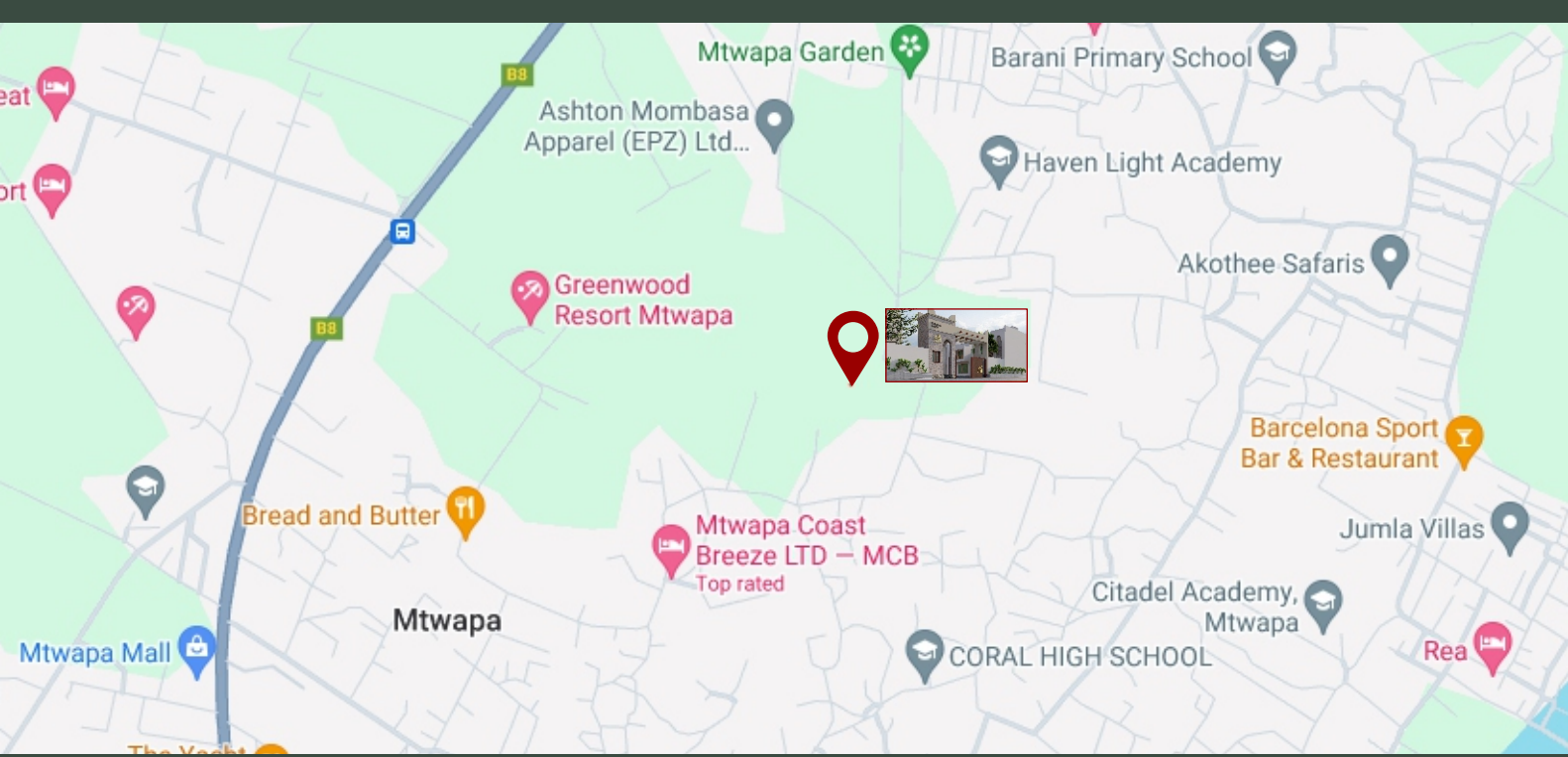
Rumman Courts offers luxury living with premium amenities. Enjoy a refreshing swim in the sparkling pool, stay active in the fully-equipped gym, or relax with friends in the elegant clubhouse. Every amenity is crafted to elevate your daily living experience.

POOL | GYM | CLUB HOUSE



SWIMMING POOL





LOCATION

Rumman Courts is perfectly situated near Mtwapa Mall and Mtwapa Gardens, offering easy access to shopping, dining, and entertainment, while still providing a serene retreat from the city's hustle.



KENYA OFFICE: +254780660074
UK OFFICE : +447400660074
sales@ahlilestates.com
www.ahlilestates.com